

ABOUT THE CLASS TAPESTRY LOOM

The lock nut on the top of the threaded rod is to prevent the wing nut from falling off and getting lost. It is very tight.

To get the most accurate measurement of height for warp, measure the threaded rod from the top of the wooden horizontal piece on the bottom to the bottom of the wooden horizontal piece on top. Measure both threaded rods to ensure that the horizontal top piece is level.

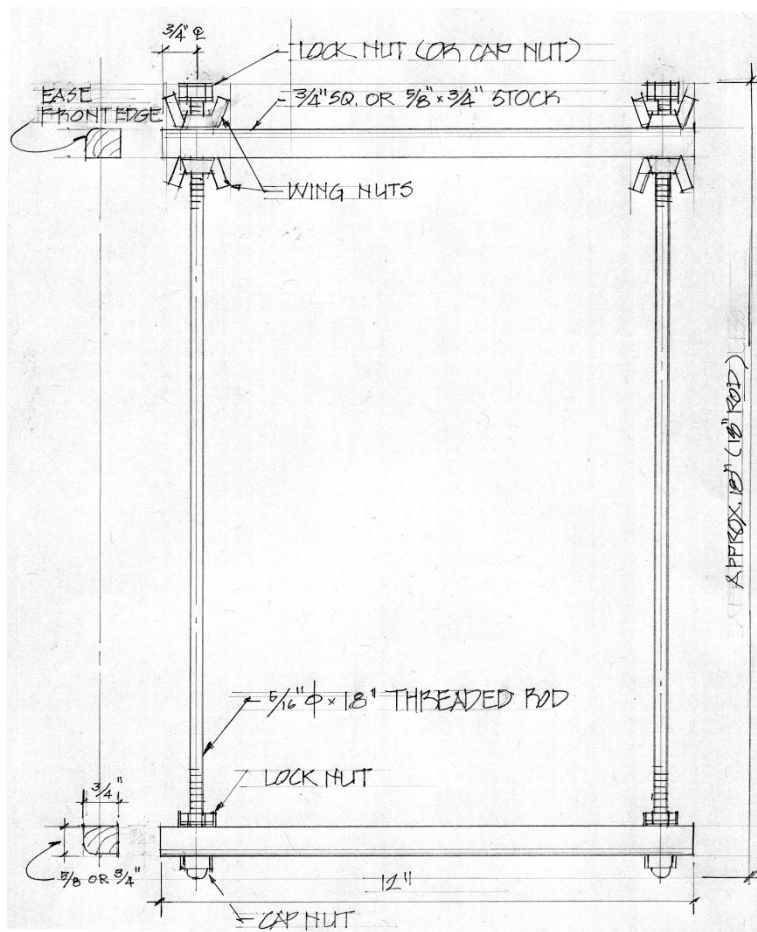
The horizontal bars are 12" wide. The vertical threaded rods are 18" long. The weaving width of the loom is about 8". Sharp edges on the wood have been sanded to protect the warp.

If you don't like the feel of the threaded rods brushing against your hands, straws are available that you can split and place around the threaded rod.

The measuring tape on the horizontal bars is masking tape. It might be found in a hardware store or can be ordered from Amazon.

The wing nuts at the top are the only nuts that need to be loosened or tightened. The wing nuts are for adjusting tension or warp length.

The loom should not torque. If you notice torque on the loom, tighten the nuts.



If you use this plan to make your own loom poplar, bass wood, or hard wood are good choices for the horizontal bars. Pine or wood with a lot of grain should be avoided to achieve best results.

If you prefer a particular kind of nuts to use, no problem. You can substitute cap nuts for the lock nuts on top for example.

A drill press makes it easier to drill the holes in the wood for the threaded rods. The holes should be straight.

Terri and Ken Bryson, January 2023

2brysons@gmail.com